

Ερμής Αργ/λης **87 - 68** Ηλιούπολη

| | | | | |
|-----|---------|-----|---------|-----|
| 83% | 5 / 6 | FT | 8 / 10 | 80% |
| 64% | 23 / 36 | 2FG | 15 / 28 | 54% |
| 43% | 12 / 28 | 3FG | 10 / 31 | 32% |
| 39 | 28 - 11 | Rb | 19 - 6 | 25 |
| | 10 | Tu | 12 | |

Referees: Παπαδόπουλος, Διόλατζης, Αλεξόπουλος

| By Quarter | 1 | 2 | 3 | 4 | End of Quarter | 1 | 2 | 3 | 4 |
|---------------|----|----|----|----|----------------|----|----|----|----|
| Ερμής Αργ/λης | 21 | 19 | 28 | 19 | Ερμής Αργ/λης | 21 | 40 | 68 | 87 |
| Ηλιούπολη | 17 | 16 | 24 | 11 | Ηλιούπολη | 17 | 33 | 57 | 68 |



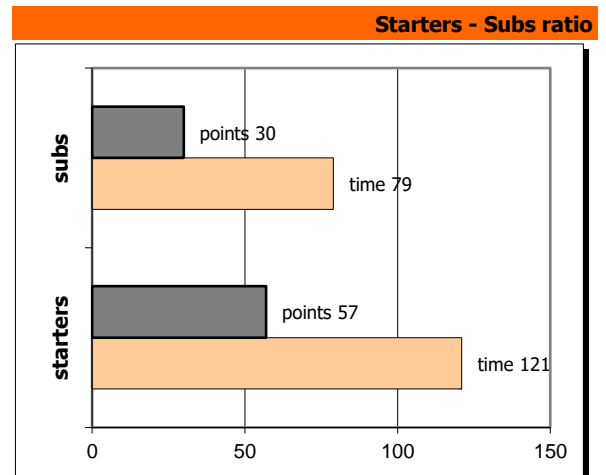
Ερμής Αργ/λης Coach: Π. Γκαναβίας, Σ. Μουσιδής

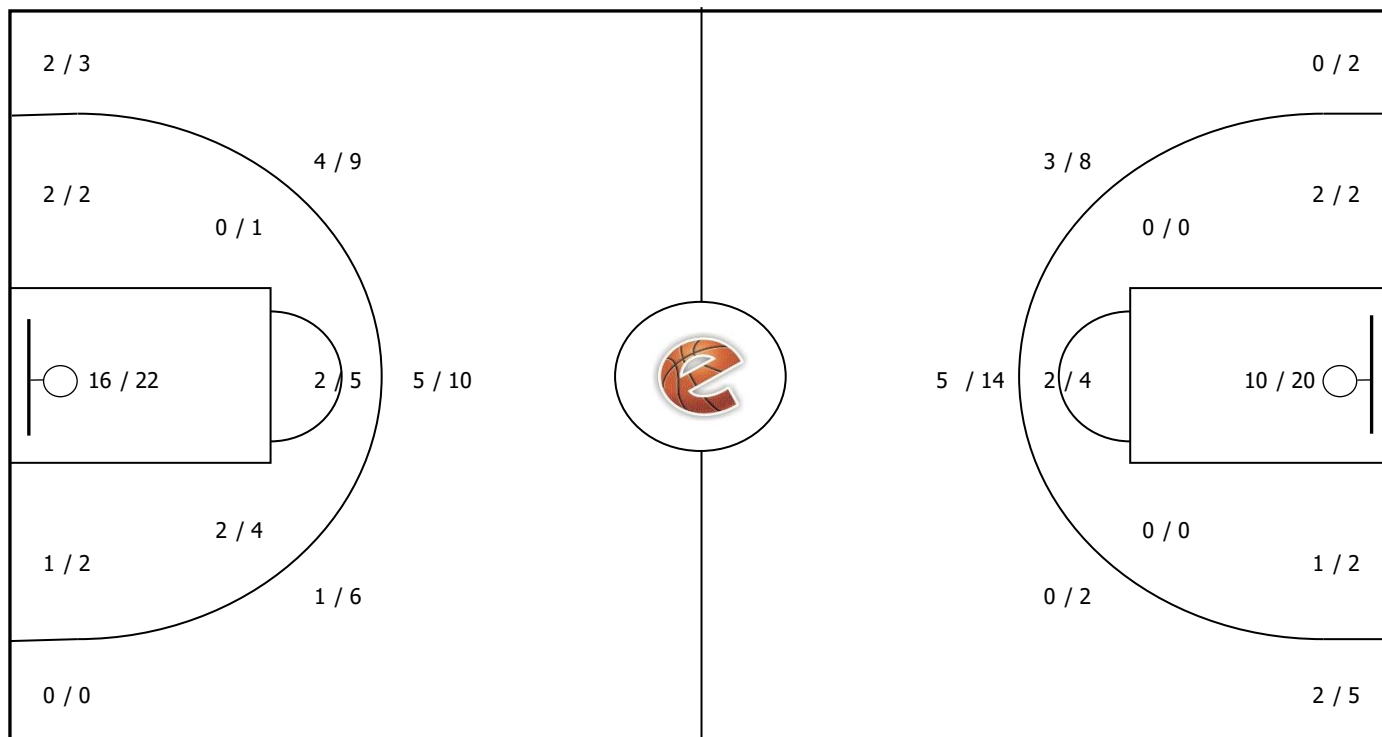
Fastbreaks: 3 / 3

| # | Player | Time (min) | Pts | Ft | 2Fg | 3Fg | +/- | Rbs | | As | St | Tu | Bl | Fouls | | Eff |
|-------------|-----------------|---------------|-----|-------|---------|---------|-----|-----|----|----|----|----|----|-------|----|-----|
| | | | | | | | | de | of | | | | | dr | co | |
| 4 | Ραζής Μ. | 19 | 8 | 0 / 0 | 1 / 1 | 2 / 5 | 17 | 1 | 0 | 4 | 3 | 0 | 0 | 1 | 0 | 13 |
| 5 | Σάκοτα Ντ. | 20 | 10 | 0 / 0 | 2 / 2 | 2 / 5 | 21 | 6 | 0 | 4 | 2 | 2 | 0 | 3 | 2 | 17 |
| 6 | Καβαλαράκης Ν. | 21 | 9 | 0 / 0 | 3 / 4 | 1 / 2 | 16 | 1 | 0 | 6 | 0 | 1 | 0 | 0 | 2 | 13 |
| 7 | Παξινός Σ. | 31 | 11 | 0 / 0 | 4 / 5 | 1 / 2 | 17 | 3 | 4 | 2 | 1 | 2 | 0 | 4 | 2 | 17 |
| 8 | Τσιπίδης Κ. | 9 | 0 | 0 / 0 | 0 / 2 | 0 / 0 | 2 | 1 | 1 | 0 | 0 | 0 | 0 | 0 | 1 | 0 |
| 9 | Πέττας Ν. | 32 | 25 | 4 / 4 | 6 / 7 | 3 / 6 | 15 | 6 | 1 | 2 | 1 | 3 | 1 | 5 | 1 | 29 |
| 10 | Γκόγκας Σπ. | 6 | 3 | 0 / 0 | 0 / 0 | 1 / 3 | 2 | 1 | 0 | 0 | 0 | 0 | 0 | 0 | 1 | 2 |
| 11 | Παπαπέτρος Ευ. | 17 | 8 | 0 / 0 | 1 / 1 | 2 / 3 | 1 | 2 | 0 | 0 | 0 | 1 | 0 | 0 | 2 | 8 |
| 16 | Χατζόπουλος Χρ. | 2 | 0 | 0 / 0 | 0 / 0 | 0 / 0 | -2 | 0 | 0 | 0 | 0 | 0 | 0 | 0 | 1 | 0 |
| 17 | Παπανδρέου Γ. | 23 | 8 | 0 / 0 | 4 / 9 | 0 / 2 | 4 | 4 | 0 | 3 | 1 | 0 | 0 | 0 | 2 | 9 |
| 14 | Τσιώκος Ν. | 18 | 5 | 1 / 2 | 2 / 5 | 0 / 0 | 0 | 2 | 4 | 0 | 1 | 0 | 1 | 3 | 1 | 9 |
| 15 | Ντόλγκαν Μ. | 2 | 0 | 0 / 0 | 0 / 0 | 0 / 0 | 2 | 0 | 0 | 0 | 0 | 0 | 0 | 0 | 0 | 0 |
| Team | | | | | | | | 1 | 1 | | | 1 | | 0 | 0 | |
| 1st quarter | | | 21 | 4 / 4 | 7 / 13 | 1 / 7 | | 8 | 8 | 2 | 1 | 3 | 2 | 3 | 2 | 27 |
| 2nd quarter | | | 19 | 0 / 0 | 5 / 7 | 3 / 9 | | 7 | 0 | 4 | 4 | 1 | 0 | 4 | 5 | 25 |
| 3rd quarter | | | 28 | 1 / 2 | 6 / 7 | 5 / 5 | | 5 | 1 | 8 | 1 | 4 | 0 | 5 | 4 | 37 |
| 4th quarter | | | 19 | 0 / 0 | 5 / 9 | 3 / 7 | | 8 | 2 | 7 | 3 | 2 | 0 | 4 | 4 | 29 |
| Final Stats | | 200 | 87 | 5 / 6 | 23 / 36 | 12 / 28 | 95 | 28 | 11 | 21 | 9 | 10 | 2 | 16 | 15 | 118 |
| | | | | 83% | 64% | 43% | | 39 | | | | | | | | |

Ηλιούπολη Coach: Γ. Μάνος

| # | Player | Pts | - | 3s |
|----|------------------|-----|---|----|
| 4 | Σπανός Σ. | 15 | - | 3 |
| 2 | Παπαδιονυσίου Γ. | 23 | - | 4 |
| 18 | Μαντάς Π. | 8 | - | 0 |
| 7 | | 0 | - | 0 |
| 8 | Παναγόπουλος Εμ. | 5 | - | 1 |
| 9 | Αλεξάκης Ν. | 0 | - | 0 |
| 10 | Ντόγκας Λ. | 0 | - | 0 |
| 11 | | 0 | - | 0 |
| 12 | Κατσούλος Π. | 0 | - | 0 |
| 13 | Χατζηκάλφας Δ. | 3 | - | 1 |
| 14 | Μηριασούλης Κ. | 3 | - | 1 |
| 15 | Γιανναλέτσος Δ. | 11 | - | 0 |

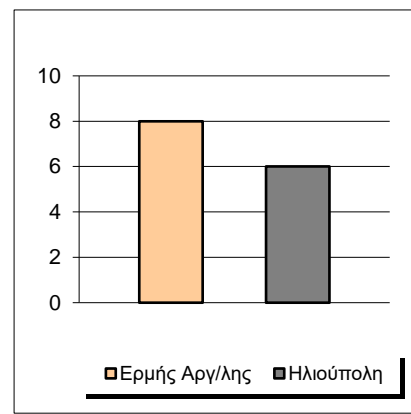
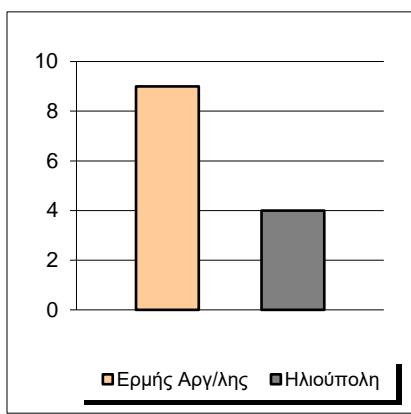
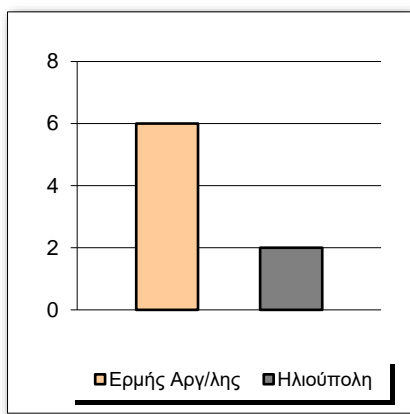




Fastbreak Pts

Turnover Pts

Second Chance Pts



Possessions

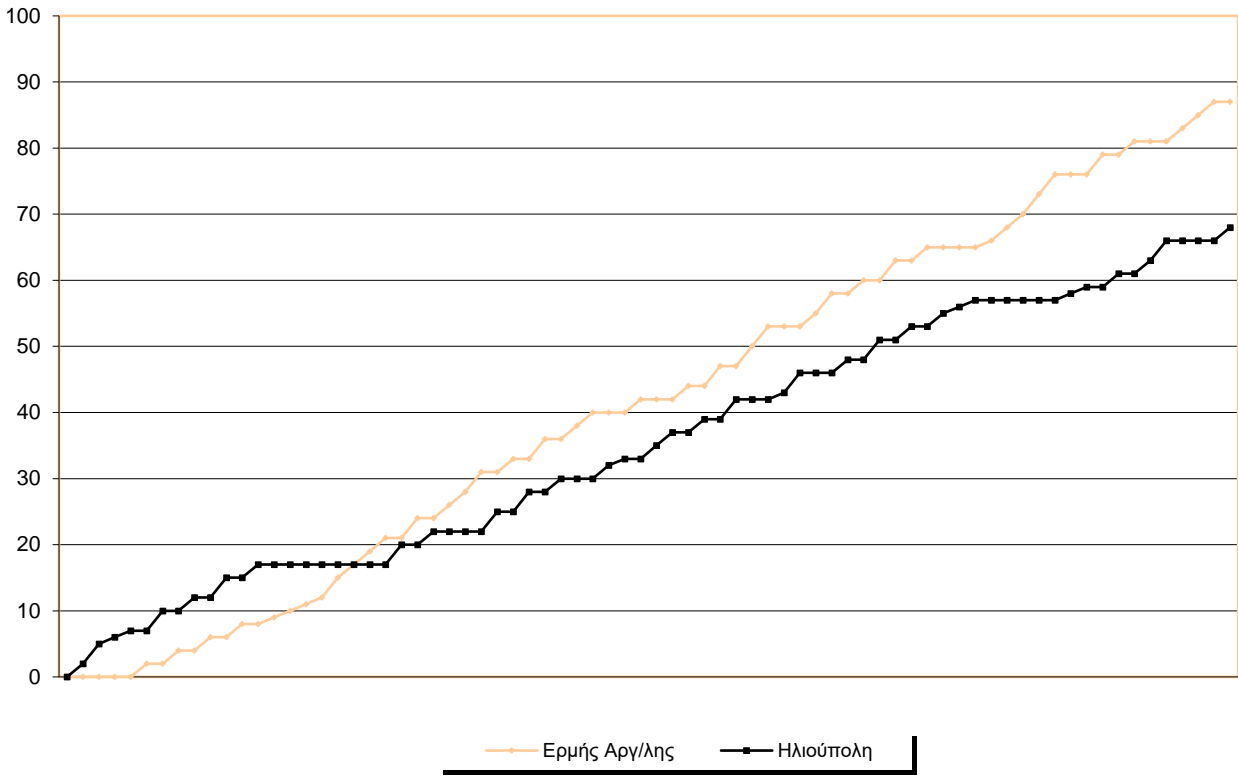
Notes

Ο Ερμής Αργ/λης είχε 90 κατοχές,
 εκ των οποίων κατέληξαν: 64 σε σουτ
 10 σε λάθος
 και 16 σε κερδ. φάουλ

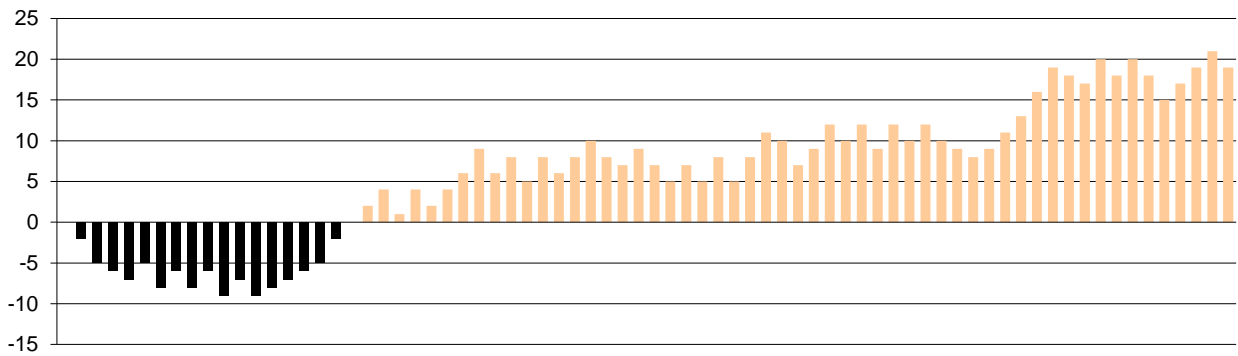


GRAPHIC STATS

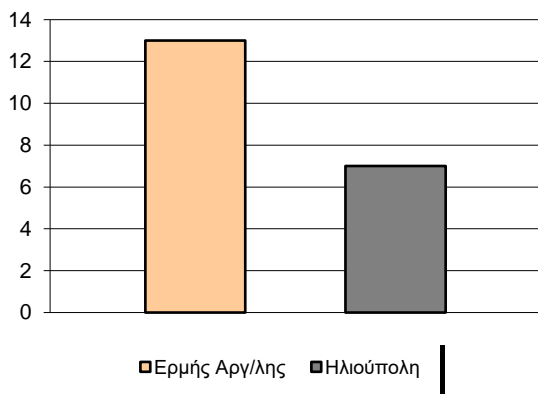
SCORE EVOLUTION



SCORE DIFFERENCE



LARGEST SCORING RUN



LARGEST LEAD

